



**GLOBUS**  
MEDICAL

*LIFE MOVES US*

*CORPORATE OVERVIEW*



Our mission is to deliver cutting-edge technology, research, and innovative solutions, to promote healing in patients with musculoskeletal disorders.

**Dave Demski, Chief Executive Officer  
Globus Medical, Inc.**



## Life Moves Us

Globus Medical is a leading medical device manufacturer with the singular goal of improving the quality of life for patients with musculoskeletal disorders. We are inspired by the needs of these patients and by the surgeons and healthcare providers who treat them.

In driving technological advancements across a complete suite of innovative solutions, Globus has addressed a broad range of musculoskeletal needs through products designed for traditional open surgery or minimally invasive procedures, while giving surgeons the tools they need to provide optimal patient care. Globus brings inspired solutions and services to the operating room each and every day.

Our philosophy is built on three fundamental principles: **Providing Exceptional Response, Delivering Innovation, and Advancing Patient Care.**

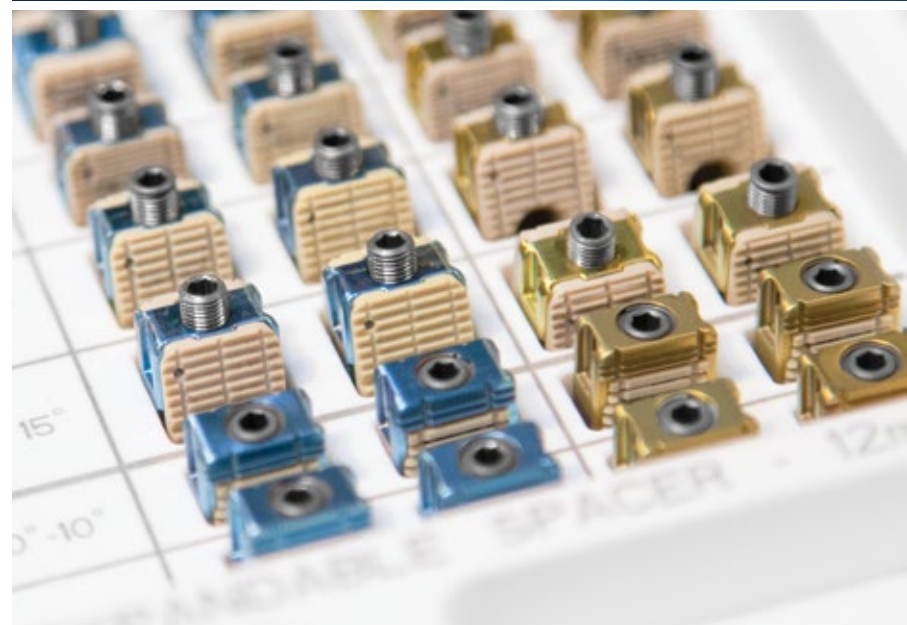
# PROVIDING EXCEPTIONAL RESPONSE

Providing exceptional response starts with understanding surgeon customers and the challenges they face. Our team actively listens to and interacts with the surgeon community regarding patient pathologies, complex surgical techniques and tough clinical challenges.

*GLOBUS IS KNOWN AS THE  
**FASTEST GROWING COMPANY IN THE  
HISTORY OF ORTHOPEDICS***

This team is comprised of an experienced sales force and product development engineers that are available to answer questions and provide technical support as needed.

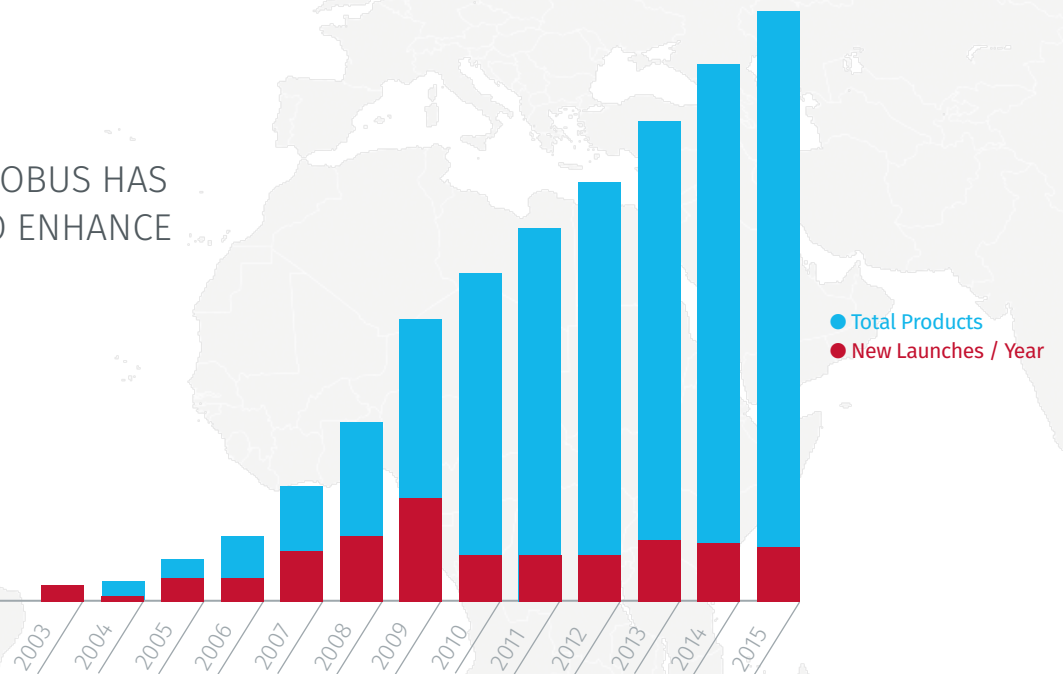
Exceptional response is one of the keys to our unprecedented growth.



**UNPRECEDENTED GROWTH** → GLOBUS HAS INTRODUCED 150+ SOLUTIONS TO ENHANCE THE CONTINUUM OF CARE

GLOBUS HAS AVERAGED  
**10<sup>+</sup>**  
PRODUCT LAUNCHES PER YEAR

GLOBUS HAS LAUNCHED  
**150<sup>+</sup>**  
PRODUCTS SINCE INCEPTION



SINCE INCEPTION, THE GLOBUS TEAM HAS GROWN TO MORE THAN **1500+** TALENTED INDIVIDUALS WORLDWIDE



# DELIVERING INNOVATION

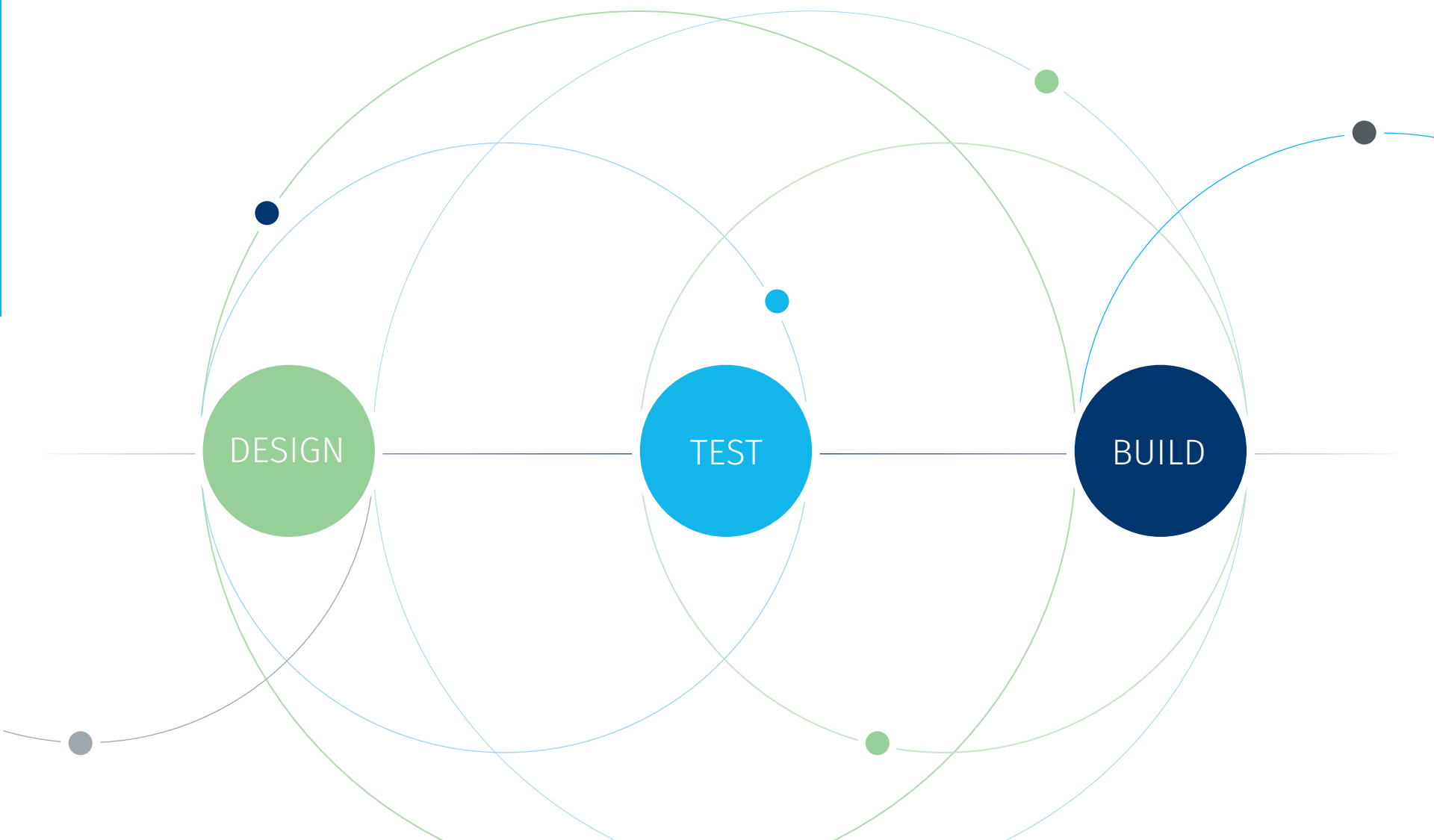
Globus delivers innovation every day by integrating biomechanical solutions into the continuum of care advanced through novel implant and instrument designs.

## *GLOBUS IS **REVOLUTIONIZING** TREATMENT OF MUSCULOSKELETAL DISORDERS*

Product development teams leverage a rapid design-prototype-test cycle to quickly transform concepts into validated products. These teams are backed by state-of-the-art fabrication and testing facilities, enabling engineers to quickly prototype and test products iteratively.

This continual focus on innovation has generated a comprehensive portfolio of Globus products designed to improve patient care.



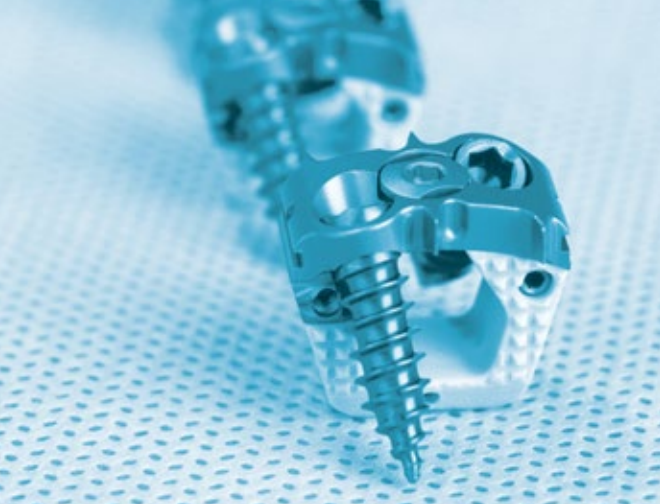


THIS ITERATIVE PROCESS DRIVES THE INNOVATION ENGINE  
AT GLOBUS TOWARD PRODUCT SOLUTIONS THAT  
ARE RIGHT AND ON TIME

**GLOBUS HAS BUILT  
A COMPREHENSIVE  
PRODUCT PORTFOLIO  
THROUGH CLINICALLY  
DRIVEN ADVANCEMENTS  
FOR IMPROVED  
PATIENT CARE**







# OUR INNOVATIVE AND MARKET DISRUPTIVE TECHNOLOGIES FACILITATE COMPLEX SURGICAL PROCEDURES

## INTERBODY FUSION

*Over the past two decades, lumbar fusion surgery has increased by 220%, cervical and thoracolumbar fusion by 89% and 31% respectively.<sup>1</sup>*

Globus pioneered the development of expandable cages to minimize nerve retraction while allowing indirect decompression, with over 35,000 expandable cage surgeries to date. These devices include CALIBER<sup>®</sup>, RISE<sup>®</sup>, ALTERA<sup>®</sup>, and LATIS<sup>®</sup>.



## TRAUMA

*Spinal fractures account for an estimated 795,000+ hospital discharges and emergency department visits each year.<sup>2</sup>*

Globus provides innovative trauma corpectomy solutions including FORTIFY<sup>®</sup>, FORTIFY<sup>®</sup> I, XPAND<sup>®</sup>, and NIKO<sup>®</sup> for robust anterior column support and TRUSS<sup>®</sup>, ELLIPSE<sup>®</sup>, CREO<sup>®</sup>, BEACON<sup>®</sup>, or REVERE<sup>®</sup> for reliable supplemental fixation.



## DEGENERATIVE SPINE

*Over 75.7 million Adults suffer from neck or low back pain. This has caused 291 million people to miss days of work.<sup>3</sup>*

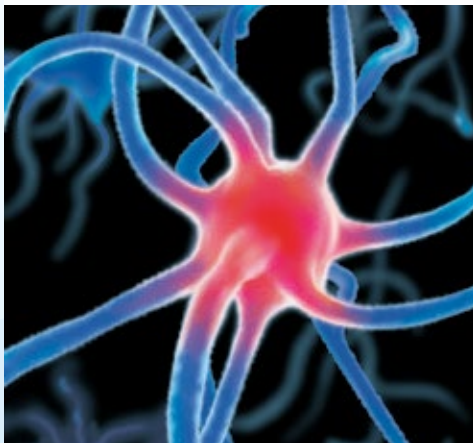
Targeting degenerative spinal pathologies, innovative Globus products such as COALITION<sup>®</sup>, XTEND<sup>®</sup>, CREO<sup>®</sup>, REVERE<sup>®</sup>, RISE<sup>®</sup>, CALIBER<sup>®</sup>, SIGNATURE<sup>®</sup>, and INDEPENDENCE<sup>®</sup> enable restoration of disc height and sagittal alignment.



## REGENERATIVE BIOLOGICS

*More than 200,000 spinal treatment procedures are performed in the United States, requiring use of various regenerative biologics for bone grafting.<sup>4</sup>*

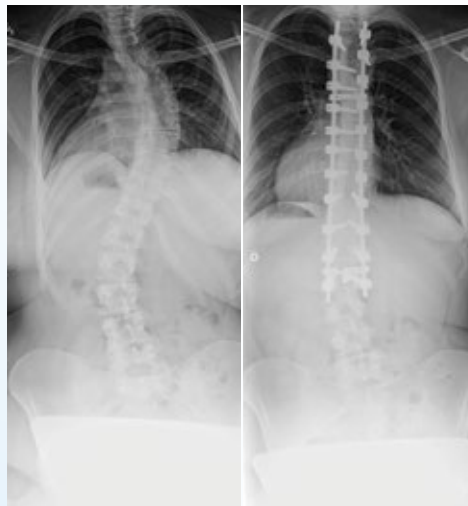
Globus offers best-in-class regenerative biologic products such as KINEX<sup>®</sup> Plus, FORGE<sup>®</sup>, XEMPLIFI<sup>®</sup> DBM, and RETRIEVE<sup>®</sup>, designed to facilitate bone growth in spinal fusion procedures.



## ADULT & ADOLESCENT DEFORMITY

*Scoliosis affects 2 to 3% of the population—an estimated 6 to 9 million people in the United States alone.<sup>5</sup>*

For unmatched ease-of-use and versatility, Globus offers intuitively designed implants and instruments including CREO<sup>®</sup> Deformity, REVERE<sup>®</sup> Deformity, CREO AMP<sup>®</sup> Deformity and SILC<sup>®</sup> for the most challenging deformity cases.



## MINIMALLY INVASIVE SURGERY

*Patients undergoing minimally invasive procedures have experienced lower infection rates, minimal blood loss and pain, and often return to work quickly.<sup>6</sup>*

Globus continues to improve patient treatment options with the most comprehensive suite of minimally invasive systems including CALIBER<sup>®</sup>, RISE<sup>®</sup>, CREO MIS<sup>®</sup>, REVOLVE<sup>®</sup>, SI-LOK<sup>®</sup>, ELLIPSE<sup>®</sup>, CAPITOL<sup>®</sup>, MARS<sup>™</sup>3VL, PLYMOUTH<sup>®</sup>, and ZYFUSE<sup>®</sup>.



# ADVANCING PATIENT CARE

Globus works with hospitals, surgeons, educators, researchers, and volunteers to respond to the needs of surgeons and patients through education, research, and international outreach.

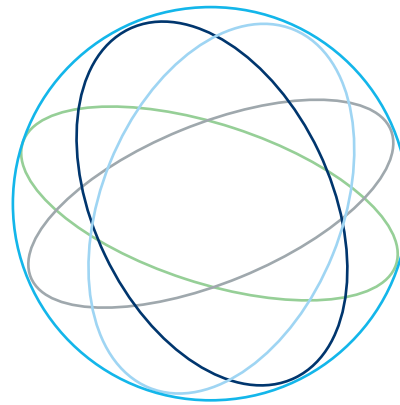


The Musculoskeletal Education and Research Center (MERC) provides educational opportunities and high-quality research to support healthcare professionals in improving patient outcomes. MERC partners with world renowned surgeon leaders to offer exceptional training in settings ranging from cadaveric labs to didactic sessions to peer-to-peer preceptorships.





The world-class MERC research facility embodies core areas of scientific excellence such as clinical research, biomechanical testing, histology, histomorphometry, radiography, SEM imaging, micro CT, videography, *in vivo* modeling, and fellowship training.



Histology

Radiography

Videography

Biomechanical Testing

Scanning Electron Microscopy

**GLOBUS IS CONSTANTLY SEEKING WAYS TO IMPROVE PATIENT OUTCOMES THROUGH SURGICAL SOLUTIONS**

# INVESTING IN OUR FUTURE

Globus Medical is focused on developing products and ideas to **improve patients' quality of life**. Guided by this principle, Globus has revolutionized product development to create an industry leading portfolio of innovative spinal solutions.

Unsolved clinical problems such as spinal deformity, spinal cord injury, and vertebral compression fractures continue to drive us to develop better treatment options for these patients.

The future offers great promise as researchers and engineers at Globus face new challenges in developing earlier treatment interventions, improvements in minimally invasive surgery, and emerging technologies.

New areas of exploration include imaging, navigation, and robotics solutions to streamline and improve surgical workflow.





This effort involves collaboration with clinicians to save time and increase accuracy while decreasing radiation exposure to both the patient and surgical staff.

Another new area of exploration is the development of novel products for the treatment of patients with traumatic musculoskeletal injuries. We are excited about bringing our expertise in product development, research, and testing to create innovative solutions for complex orthopedic trauma.



Learn more about how Globus Medical is shaping the future of the musculoskeletal device industry while advancing patient care, at [GlobusMedical.com](http://GlobusMedical.com)

*Life Moves Us*

1 Rajaei S, Bae H, Kanim L, et al. Spinal fusion in the United States: analysis of trends from 1998 to 2008. *Spine* (Phila Pa 1976). 2012;37(1):67-76.

2 Boden SD. Overview of the biology of lumbar spine fusion and principles for selecting a bone graft substitute. *Spine* (Phila Pa 1976). 2002;27(suppl 1):S26-S31.

3 T1.3.1: Source: National Health Interview Survey (NHIS), Adult sample. [http://www.cdc.gov/nchs/nhis/nhis\\_2012\\_data\\_release.htm](http://www.cdc.gov/nchs/nhis/nhis_2012_data_release.htm) Accessed July 2, 2013.

4 Kannan A, Dodwad SN, Hsu WK. Biologics in spine arthrodesis. *J Spinal Disord Tech*. 2015;28(5):163-170.

5 Alliance for Regenerative Medicine, Regenerative Medicine Annual Report March 2012-March 2013 [http://alliancerm.org/sites/default/files/ARM\\_Annual\\_Report\\_2013\\_Website.pdf](http://alliancerm.org/sites/default/files/ARM_Annual_Report_2013_Website.pdf)

6 Becker's Spine Review, Minimally Invasive vs. Open Spine Surgery: 6 Key Points <http://www.beckersspine.com/spine/item/19204-minimally-invasive-vs-open-spine-surgery-6-key-points.html>

Globus Medical, Inc., Valley Forge Business Center, 2560 General Armistead Avenue Audubon, PA 19403

To obtain more information on Globus Medical programs, or to speak with a sales representative, contact Globus staff at:

Phone: 1-866-Globus1 (866-456-2871) | Fax: 1-866-Globus3 (866-456-2873) | [GlobusMedical.com](http://GlobusMedical.com)